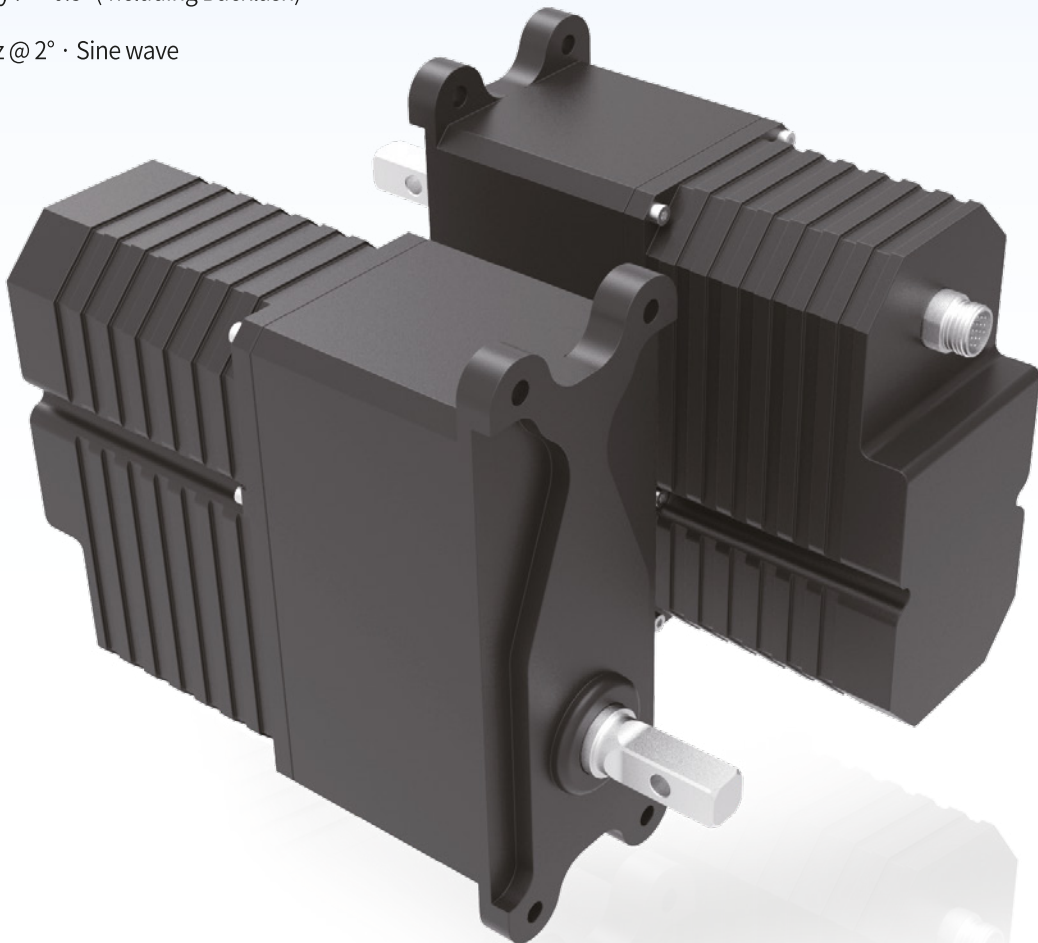


ServoMax 500

Electromechanical Actuator

Characteristics

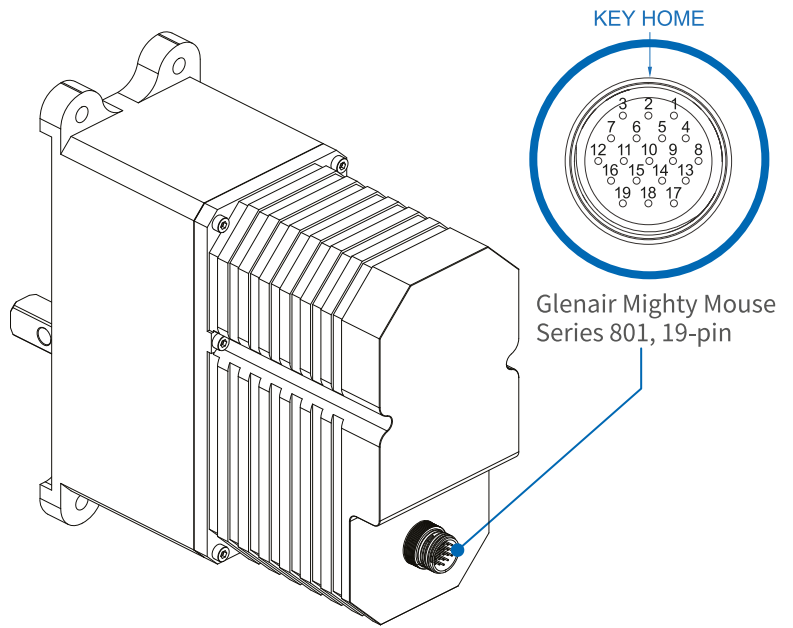
- Processor : High performance DSP
- Main Components : High reliability BLDC motor & Triple contactless position sensor
- Interface : Dual CAN, PWM & Analog feedback
- Rated Torque : 500kgf·cm (49Nm)
- Max. Operating Torque : 800kgf·cm (78Nm)
- Rated Speed : 80°/sec @28VDC
- No Load Speed : 150°/sec @28VDC
- Operating Voltage : 18~32VDC
- Rated Current : 9.0A (Peak Current 18A)
- Angular Backlash : $\leq 0.3^\circ$
- Control Accuracy : $\leq 0.5^\circ$ (Including Backlash)
- Bandwidth : 5Hz @ 2° · Sine wave
- Weight : 2.0kg
- Stainless Steel Gear, Aluminum Case (with anodized)
- Max. Travel Angle : $\pm 170^\circ$ (Mechanical Stop-Optional)
- Connector : Circular
- Operating Temperature : $-40^\circ\text{C} \sim 71^\circ\text{C}$
- MIL-STD-810G (Temperature, Vibration, Shock, Humidity, Altitude, Rain, Salt Fog)
- MIL-STD-461F (CE102, CS101, CS114~116, RE102, RS103, to be extended as per a specific application need)
- MTBF : 2,000hr @ 50% Rated Torque(rms)
- EMI Filter



ServoMax500 Interface

ELECTRICAL INTERFACE

| Pin# | Function | Notes |
|-------|--------------|------------------------|
| 1 | CAN_CH_A+ | CAN Channel A |
| 2 | CAN_CH_A- | CAN Channel A |
| 3 | CAN_CH_B+ | CAN Channel B |
| 4 | CAN_CH_B- | CAN Channel B |
| 5 | PWM_COM+ | Input(diff+) |
| 6 | PWM_COM- | Input(diff-) |
| 7 | Analog_FB | Analog Feedback(0~5V) |
| 8 | Fault_Status | Open Collector, Output |
| 9 | Reserved | Input(~28V) |
| 10 | GND | Signal GND |
| 11 | Earth | |
| 12~15 | +28V_HOT | Input |
| 16~19 | 28V_RTN | Return |



- 801-011-07M9-19PA : Glenair Circular Connector, Jam Nut
- Dual CAN (CAN2.0A, Customizable or CANAerospace v.1.7 to be supported)
- Mating Connector : 801-007-16M9-19SA

DIMENSIONS

[mm]

